

Volume 21, Issue 04, April, 2008

**Inside This Issue**

Presidents letter..... 1  
 April May Calendar ..... 2  
 Class Schedule..... 3  
 Worth the Read.....4  
 American Federation  
 2008 show.....5  
 March Minutes.....6



**Mascot of the Arlington Gem and Mineral Club**

is an affiliate of



**South Central Federation of Mineral Societies**



**American Federation of Mineralogical Societies**

**UPCOMING PROGRAMS**

**April—Live Auction**



**Rockhound Club News of the Arlington Gem and Mineral Club  
 1408 Gibbins Road, Arlington, Texas 76011**

**Just a Thought from your President for March**

by Dale Miller, President AGMC



The March program was very well received. Bob Hord had a table full of laboratory grown faceting material. The story he told to explain the difference between lab grown crystals and nature grown crystals had everyone laughing.

The next program will be a live auction. The club has accumulated a lot of 'stuff'. We also want to get rid of some of the rock that is in the hall. Hope you can come, we will stop no later than 9:30.

Our club parking lot sale will be May 17 from 8 till whenever. More details in the May hound's Tale.

We need someone to take over the displays at the local libraries. Veronica's parents are getting older and need more of her time. She will be available to help anyone who volunteers. She has a folder of contact names and numbers. The central Arlington library lets us display in August. This is a good boost for the show the last weekend in August. Please let Veronica Murday know if you can take over this position.

The board met March 25 and agreed to purchase new books for the library in memory of the members who have passed away. This has been done for many years but somehow we missed the past 3 or 4 years. These are the names I remember. Please let me know the members who have passed that are not listed here. Eve and Grady Shultz, Kay Smith, Cora Lauanders, Leonard Lee, Mike Hughey.

This policy not only honors our members but adds books for the current members to enjoy.

Dale Miller

**2008 Officers**

- |   |                                |
|---|--------------------------------|
| Dale Miller, President                      | Tom McCormick, Secretary       |
| Emie Stewart, Class Supervisor              | Paula Truitt, Treasurer        |
| Harold Hoskison, Program Chair              | Sam Howeth, Delegate @ large   |
| Tamara Wilkins, Youth                       | Robert Truitt, Newsltr Editor  |
| Irene Stemple/Brian Bowles, Fieldtrip Chair | Rick Litsinger, Past-President |

## April 2008 AGMC Classes and Meeting Schedule

Sunday	Monday	Tuesday	Wednesday	Thursday	Friday	Saturday
		<b>1</b> <u>Club Meeting</u>	<b>2</b> Silversmithing 101 <b>CLOSED</b> 7 - 10 pm ~ Faceting <b>Open</b> 7-9 pm	<b>3</b> <b>** Lab Open</b> ~ Wax Carving Lab <b>Open</b> 7pm - 9pm	<b>4</b> Silversmithing 401 <b>CLOSED</b> 7 - 10 pm	<b>5</b> <b>** Lab Open</b> 9am-Noon ~ Cabbing class <b>Open</b> 1 p - 4p
<b>6</b>	<b>7</b> Silversmithing 103 <b>CLOSED</b> 7 - 10 pm	<b>8</b>	<b>9</b> Silversmithing 101 <b>CLOSED</b> 7 - 10 pm ~ Faceting <b>Open</b> 7-9 pm	<b>10</b> <b>** Lab Open</b> ~ Wax Carving Lab <b>Open</b> 7pm - 9pm	<b>11</b> Silversmithing 401 <b>CLOSED</b> 7 - 10 pm	<b>12</b> <b>** Lab Open</b> 9am-Noon ~ Chainmaking <b>Open</b> 9a - 12noon
<b>13</b> Glass Fusing <b>Full</b> Noon - 4pm	<b>14</b> Silversmithing 103 <b>CLOSED</b> 7 - 10 pm	<b>15</b> Free Tuesday 7-9p for Members	<b>16</b> Silversmithing 101 <b>CLOSED</b> 7 - 10 pm ~ Faceting <b>Open</b> 7-9 pm	<b>17</b> <b>** Lab Open</b> ~ Wax Carving Lab <b>Open</b> 7pm - 9pm	<b>18</b> Silversmithing 401 <b>CLOSED</b> 7 - 10 pm	<b>19</b> Silversmithing Lab <b>Open</b> 8a - Noon ~ <b>** Lab Open</b> 9am-Noon
<b>20</b>	<b>21</b> Silversmithing 103 <b>CLOSED</b> 7 - 10 pm	<b>22</b>	<b>23</b> Silversmithing 101 <b>CLOSED</b> 7 - 10 pm ~ Faceting <b>Open</b> 7-9 pm	<b>24</b> <b>** Lab Open</b> ~ Wax Carving Lab <b>Open</b> 7pm - 9pm	<b>25</b> Silversmithing 401 <b>CLOSED</b> 7 - 10 pm  <b>**DEADLINE FOR MAY NEWSLETTER</b>	<b>26</b> <b>** Lab Open</b> 9am-Noon ~ Glass Fusing <b>Full</b> 9a - 1p
<b>27</b>	<b>28</b> Silversmithing 103 <b>CLOSED</b> 7 - 10 pm	<b>29</b>	<b>30</b> Silversmithing 101 <b>CLOSED</b> 7 - 10 pm ~ Faceting <b>Open</b> 7-9 pm			

### AGMC April Class Schedule

By Emie Stewart

#### Cab Class

1st Saturday, April 5 1, 1-4 PM  
 Instructor: Dale Miller

#### Chainmaking OPEN

2nd Saturday, April 12, 9 AM - Noon  
 Instructor: Mary Owen

#### Faceting

Wednesdays, 7-9 PM  
 Instructor: Frank Krystinik/Mike Knuth

#### Glass Fusing CLOSED

Second Sunday, April 13, Noon – 4 PM  
 Fourth Saturday, April 26, 9AM – 1 PM  
 Instructor: Becky Downey

#### Silversmithing

Instructors: Sam Howeth/Rick Litsinger

Level 101 OPEN  
 Wednesdays 7-10 PM

Level 103 CLOSED  
 Mondays 7-10 PM

Level 301 OPEN  
 Fridays 7-10 PM  
 Open to those that have completed 202

Level 401 CLOSED  
 Fridays 7-10 PM

Silversmithing Lab OPEN  
 3<sup>rd</sup> Saturday, April 19, 8 AM – Noon

#### Wax Carving Lab

Thursdays 7-9 PM

### AGMC Hound's Tale Advertising Rates

Size	Dimensions	Members		Non-members	
		6 months	1 month	6 months	1 month
Full page	9.5" x 7.75"	\$120	\$25	\$240	\$50
Half page (v)	9.5" x 3.75"	\$72	\$15	\$144	\$30
Half page (h)	4.625" x 7.75"	\$72	\$15	\$144	\$30
Qtr page (v)	4.625" x 3.75"	\$48	\$10	\$96	\$20
Qtr page (h)	2.375" x 7.75"	\$48	\$10	\$96	\$20
Biz Card (v)	2" x 3.5"	\$30	\$6.25	\$60	\$12.50
Biz Card (h)	3.5" x 2"	\$30	\$6.25	\$60	\$12.50

All ads are subject to approval by the AGMC executive board. Layout of the ad is included in price as long as all ad content is included with the initial request. Digital artwork must be included with the initial request or the ad will be created as text only. Ad requests must be received by the 2nd Thursday of each month for the following month's newsletter by email at: [editor@agemclub.com](mailto:editor@agemclub.com). Make payable to **Arlington Gem & Mineral Club**. Send payments to:

Arlington Gem & Mineral Club  
 P.O. Box 986  
 Arlington, TX 76004

For any questions regarding layout, please contact Robert Truitt at: [editor@agemclub.com](mailto:editor@agemclub.com).  
 For any questions regarding appropriate content, please contact Dale Miller at: [www.agemclub.com](http://www.agemclub.com).

### Worth the read.

Jewelry Wax Modeling, by Adolfo Mattiello, is an excellent reference for wax carving. Mr. Mattiello, who was educated in Europe and South American, has been a jeweler and model maker for various New York City jewelry manufacturing firms for over twenty years. He has taught model making at the prestigious Revere Academy of Jewelry Arts in San Francisco and has held workshops for Rio Grande Corporation. The book is organized into eleven lessons, beginning with a basic man's ring and concluding with an exquisite ballerina ring. Mr. Mattiello focuses on the techniques of design and layout on the wax ring blank, including how to use dividers and templates to shape the ring's profile. Each lesson contains detailed illustrations and step-by-step instructions. Some lessons include instructions on how to carve channel settings, pave settings, and prong settings in the wax. This book is an excellent resource for both those new to wax carving and those who are experienced.

This book does not cover the casting process, however, except for a brief discussion in the back. One of the best overall references I've found for casting is Practical Casting by Tim McCreight. McCreight is a nationally recognized metalsmith, and has also taught at the Revere Academy and held workshops for Rio Grande. He is on the faculty of the Maine College of Arts, and has taught at the renowned Haystack Mountain School of Craft in Deer Isle, Maine. McCreight's book covers the lost wax casting process in detail, including spruing, investing, burnout, and casting. He also discusses direct methods of casting such as cuttlefish bone casting and sand casting.

Together, these two books provide a reliable guide to the process of making a wax model and then casting it in metal, and are well worth the read.

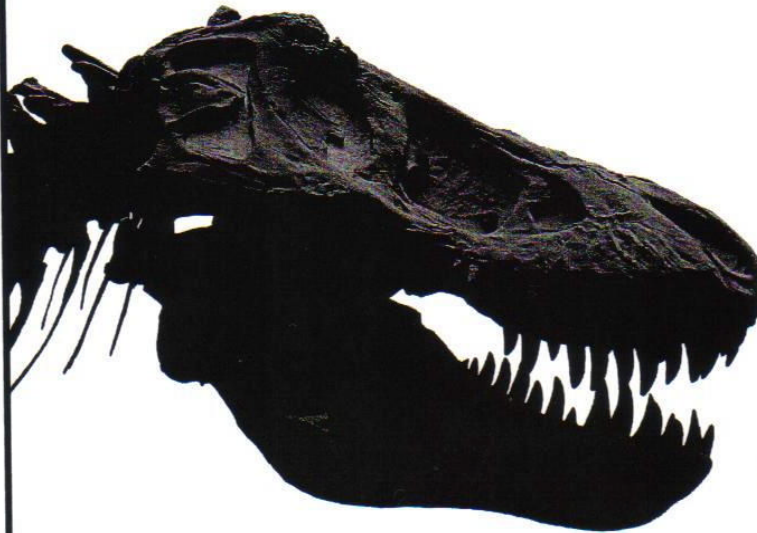
*By Emie Stewart*

Don't forget the live auction April 1 at 7:30 pm  
Located at the clubhouse.

**THE EMPIRE IS GOING OUT OF BUSINESS**  
**LIQUIDATING TOOLS AND EQUIPMENT FINDINGS**  
**GOLD AND SILVER , GEM ROUGH , AND GEMSTONES**  
**HAL HUGLEY ----- (972) 641-4035**

American Federation of Mineralogical Societies  
and Houston Gem & Mineral Society present

# 2008 National Gem, Jewelry, Mineral & Fossil Show



*Three days of fun  
for the whole family!*

**WHEN:**

September 26-28, 2008  
Friday: 9 a.m. – 6 p.m. (Kids' Day)  
Saturday: 9 a.m. – 6 p.m.  
Sunday: 10 a.m. – 5 p.m.

## September 26-28, 2008

- Shop at more than 40 gem, jewelry, mineral, lapidary, and fossil dealers.
- Join in continuous children's activities, including the "Dino Dig" and Scout Merit Badges.
- See jewelry-making and gemstone-cutting demonstrations and educational displays, including a fluorescent rock room.
- Bring your gemstones, rocks, minerals, and fossils for FREE expert identification.

**TICKETS:** (good for all 3 days!)

Adults: \$5  
Students, Teachers, Seniors: \$3  
Children under 12: FREE  
**FREE PARKING**



**LOCATION:**

Humble Civic Center ★  
8233 Will Clayton Parkway  
Humble, TX 77396



For more information, visit the HGMS Web site at [www.hgms.org](http://www.hgms.org) or contact Show Chairman Scott Singleton at 713-664-9033 or at [show@hgms.org](mailto:show@hgms.org).  
Address inquiries to HGMS, 10805 Brooklet, Houston, TX 77099.

## ARLINGTON GEM AND MINERAL CLUB

### March 4, 2008 General Meeting

Call to Order: The meeting was called to order by Dale Miller at 7:30

Visitor's Introduction: Veronica Murday

- Eric Holm
- Jan Hoskison

Secretary's Report: Tom McCormick

- February minutes were posted on the bulletin board.
- The minutes will be in the newsletter from now on and Dale Miller is emailing the newsletter each month to those members who have given her their email address.

Treasurer's Report: Paula Truitt

- Report posted on bulletin board

Classes: Emie Stevens:

- No new classes this month
- Becky Downey announced glass classes are full and if there are openings she will contact those on the waiting list.
- The third Saturday Silversmithing lab will not be held in March.

Program: Harold Hoskison

- This meeting Bob Hord – Laguna Park, TX, is presenting synthetic gem stones
- April will be spring auction.
- May Captain Tony Graham (AGMC member) to present topic of gold hunting – prospecting in Nome, Alaska

Field Trips: Brian Bowles sent word that the Sat. Mar 15 to tour Mayborn Museum in Waco is on and he is still working on visit to a gravel pit.

- If anyone is interested be sure to get on Brian's list at the club and contact him by phone or email.

Youth Section

- Tamra Wilkins volunteered to be the Juniors Leader.
- She will need help. Her number is 817-466-1933

Show Report: Karen Cessna (Feeling ill and not present)

- Planning is going well according to Dale.

Newsletter – Robert not present. Newsletter is out.

**Club Mission:**

The objectives of the Arlington Gem and Mineral Club shall be to educate the public in the study of the earth sciences, lapidary arts, designer jewelry and all related fields.

**Yearly Enrollment****recommended donation:**

Initial Adult Enrollment	\$35.00 (includes \$5.00 badge)
Adult Renewals	\$30.00 per calendar year
Junior Members	\$3.50 per calendar year

Activities take place at:  
Arlington Gem and Mineral Club  
1408 Gibbins Road, Arlington, TX 76011  
Phone 817-277-2286

Mailing Address:  
P.O. Box 986  
Arlington, TX 76004

E-mail Address:  
editor@agemclub.com or  
webmaster@agemclub.com

World Wide Web Home Page:  
<http://www.agemclub.com>

Business Meeting on 1st Tuesday at 7:30 PM  
Board Meeting on the last Tuesday of each  
month at 7 PM.

**The Hound's Tale**

Published monthly by the Arlington Gem and Mineral Club.

**Permission To Reprint**

Permission is granted for non-commercial reproduction provided the articles remain essentially intact and credit is given to the author and source.

**Ads and Articles**

Lapidary-related ads and articles from Members of AGMC are welcomed. They will be placed on a space-available basis, first in first out. Any articles may be edited for space and content. Non-enrolleés ads are accepted after student ads. You must include your name and contact information.

**Arlington Gem and Mineral Club**  
(formerly Texas School of Earth Sciences)  
**P.O. Box 986**  
**Arlington, TX 76004**  
Newsletter is available on our Website at  
[www.agemclub.com](http://www.agemclub.com)  
ADDRESS CORRECTION REQUESTED

